



How To Self-Collect a Vaginal Specimen

PRODUCTS: A variety of Puritan swabs are suitable for vaginal specimen collection including swabs in dry transport tubes.

SUGGESTED PURITAN SWABS FOR VAGINAL SPECIMEN COLLECTION

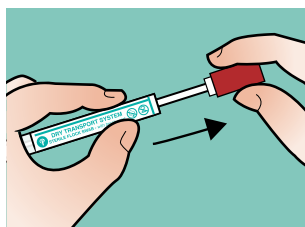
Polyester	25-806 1PD, 25-806 1PD BT
Rayon	25-806 1PR, 25-806 1PR BT
Flock	25-3706-U, 25-3706-U BT

This specimen collection guide is for:

- ***Chlamydia trachomatis (CT)***
- ***Neisseria gonorrhoeae (GC)***
- ***Other bacterial and viral infections***

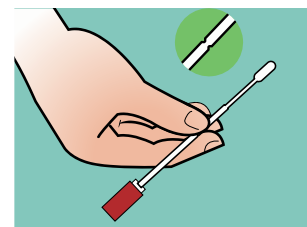
STEP 1

Remove the swab from the tube. Do not use if the seal is broken or damaged.



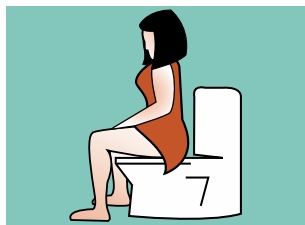
STEP 2

Hold the swab at the breakpoint indicator mark, with the swab tip facing you.



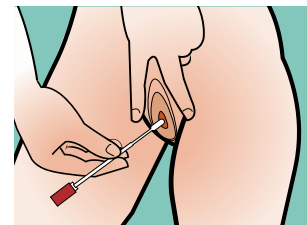
STEP 3

Get in a comfortable position, either sitting or standing.



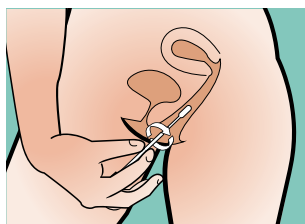
STEP 4

Using your free hand to hold back the folds of the vagina, insert the swab tip into the vaginal opening.



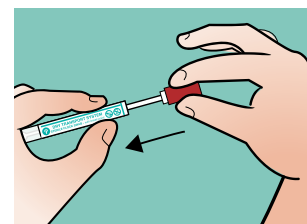
STEP 5

Gently slide the swab into the vagina and stop when your fingers reach the vaginal opening. Rotate the swab for 10-15 seconds.



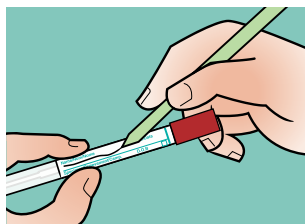
STEP 6

Withdraw the swab carefully, insert back into the tube and close the cap.



STEP 7

Record your patient information as required on the tube label. Return tube to your provider as directed.



PURITAN SWABS IN DRY TRANSPORT TUBES are used to collect vaginal samples for testing of sexually transmitted infections (STI) or other possible pathogens. These swabs are designed with patient comfort in mind and are available in a variety of tip fibers. After collection, the swab is held in the provided tube for convenient transport with the label showing patient identification and sample information for lab use.

This guide is for illustration purposes only. This information is not intended to be a substitute for professional, medical advice, diagnosis, or treatment. Please consult with a licensed medical professional and/or the test manufacturer's product insert for specific specimen collection and transport instructions. For the most accurate and up-to-date testing and treatment guidelines, refer to the Centers for Disease Control and Prevention (CDC.gov) for more information.

